

# IHS BOM Manager

## Automated Tools for Managing Product Information

Manufacturers today face pressures to improve time-to-market and quality while reducing costs and complying with laws governing hazardous materials. These initiatives are taking place in a competitive environment where products and development processes are becoming more complex as new technology is introduced at a faster rate, supply chains are expanding, and more countries are adopting environmental regulations.

An effective product information management system will allow companies to increase the pace of new product introductions by improving communication and control, identify at-risk components and technology early in the product development cycle to avoid obsolescence and compliance risks, and manage configurations and suppliers to reduce product cost.

IHS BOM Manager provides capabilities to enable organizations to build a competitive advantage by:

- Avoiding shortages of critical components to meet production and revenue targets
- Identifying technology advances that can affect designs, sources, or margins
- Avoiding lost opportunities in markets with environmental regulations
- Managing component availability for extended product life cycles.

### **Collaborate to effectively manage configurations and suppliers**

BOM Manager automates product management by linking information, people, functions, and processes to:

- Actively identify obsolescence issues by monitoring component status changes, life cycle forecasts, manufacturer PCNs, EOL Notices and GIDEP alerts
- Analyze impacts and risks at the component, assembly, product line and platform levels



- Automate resolution processes and communication with responsible parties
- Enhance practices by documenting issues, resolutions, approvals, costs, and other metrics.

#### Identify potential impacts earlier

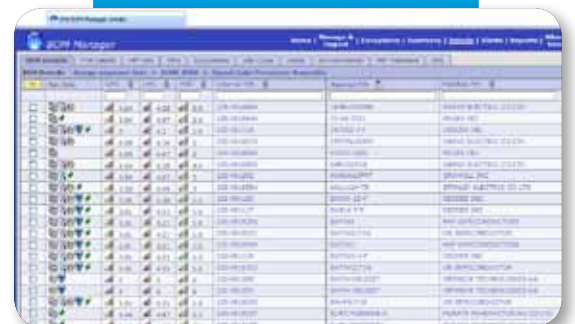
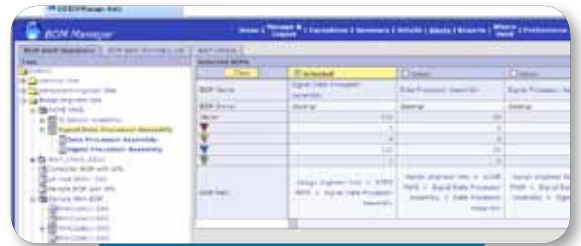
- Receive daily updates for component status, PCN, and EOL notices, GIDEP alerts, failure notices, last time buy and delivery dates, and reinstatement parts
- Generate life cycle and hazardous material health scores based on the years to end of life forecast, number of active suppliers, RoHS compliance, lead-free status, and hazardous material attributes
- Access REACH material content attributes
- Compile Where-Used and Commonality reports based on part number, technical characteristic, alert notice, or manufacturer
- Generate 2-4-8 year availability forecasts at the assembly and part level.

#### Automate critical processes

- Organize and manage BOMs in a single, secure environment
- Import fully indented BOMs; maintain relationships with alpha/numeric levels or next higher assembly designation
- Automate part number and manufacturer name cleansing
- Build a knowledge database of reconciled supplier and part exceptions
- Monitor BOM processing events and status
- Track new, reviewed, and under investigation alerts
- Generate AML records for parts that match DSCC or Military Specification parts
- Summarize exceptions and obsolescence impacts
- Manage Approved Manufacturer Lists (AVLs) with multiple manufacturer parts with preferred part / manufacturer designation
- Assign part with best life cycle score to matching AML parts
- Identify alternate sources and active generic manufacturers
- Capture comments and resolutions and automatically copy to matching parts across all BOMs
- Import custom attributes; label and view in the application and reports
- Establish Restricted and Read-Only User roles to control import, view, and edit capabilities.

#### Integrated with IHS Parts Universe

BOM Manager includes IHS Parts Universe, the leading electronic component database with attribute data and documentation from over 500 manufacturers. Users can easily research components by part number, manufacturer, or characteristics and automatically upload attributes into BOM Manager reports to improve decision support and resolution processes.



Manage complex product structures, automatically monitor alerts, and generate detailed reports with BOM Manager's advanced capabilities.

For more information on IHS Inc.:  
 Worldwide +1 303 397 2896  
 USA/Canada 800 716 3447  
 Web: [www.ihs.com](http://www.ihs.com)  
<http://solutions.ihs.com>



The Source  
 for Critical Information and Insight™